

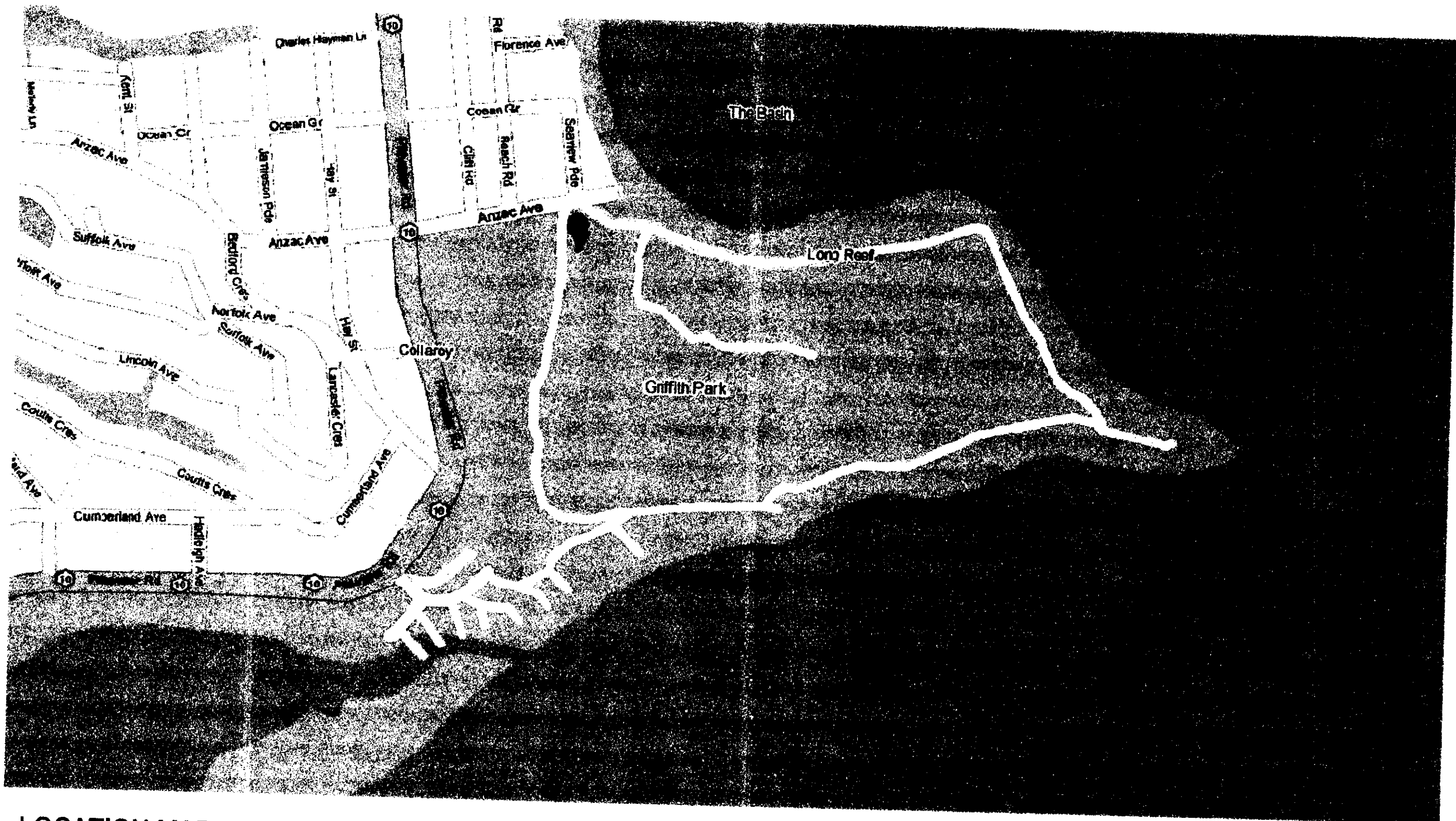
Drawing List				
Sheet Number	Sheet Name	Date	Issue	
DA-01	Site & Location Plan	20/04/11	3	
DA-02	Ground Floor	20/04/11	2	
DA-03	Basement/Mezzanine	20/04/11	4	
DA-04	East & West Elevations	20/04/11	2	
DA-05	North & South Elevations	20/04/11	2	
DA-06	Sections & Detail	20/04/11	2	
DA-07	Drainage Plan	20/04/11	2	
DA-08	Landscape Concept	20/04/11	2	
DA-09	Finishes Schedule	20/04/11	2	
DA-10	Staging Plan	04/21/11	1	

Ramp Schedule				
Family and Type	Mark	Description	Width	Length
Ramp: 1/14				
Ramp: 1/14	1	Disabled ramp	2500 mm	13460mm
Ramp: 1/14	2	Disabled ramp	2500 mm	13460mm
Ramp: 1/14	3	Disabled ramp	1200 mm	13460mm
Ramp: 1/14	4	Disabled ramp	2000 mm	19296mm
Ramp: 1/14	5	Disabled ramp	1200 mm	14031mm

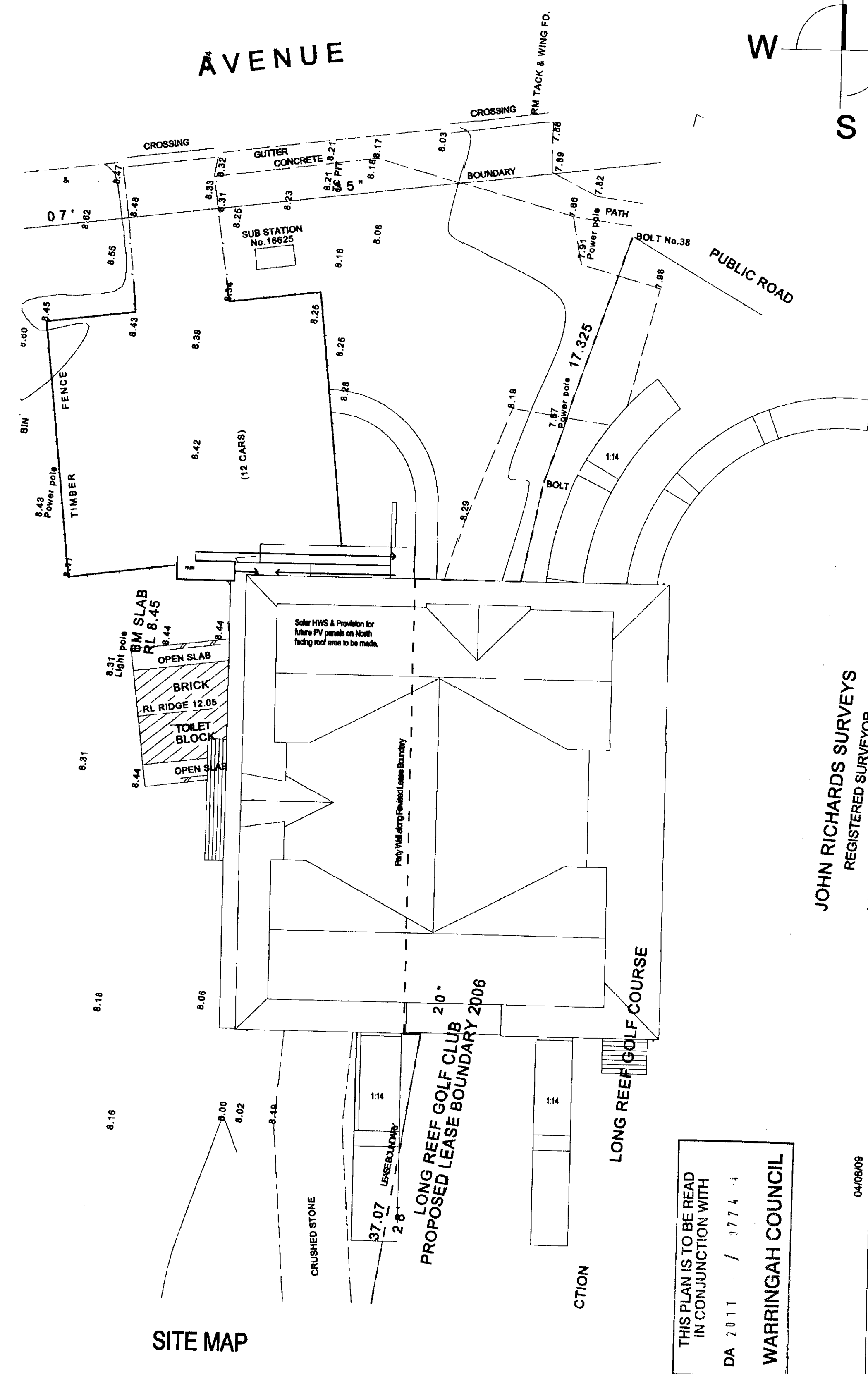
Stair Schedule						
Mark	Family and Type	Risers	Riser Height	Min. Tread Depth	Width	Base Level / Top Level
01						
01	Stair: Monolithic Concrete Stair	9	167 mm	250 mm	3000 mm	Ground Floor / Ground Floor
01	Stair: Monolithic Concrete Stair	14	171 mm	250 mm	1000 mm	Basement / Ground Floor
01	Stair: Monolithic Concrete Stair	6	167 mm	250 mm	8000 mm	Oval / Ground Floor
02	Stair: Monolithic Concrete Stair	6	167 mm	250 mm	8000 mm	Oval / Ground Floor
03	Stair: Timber Stair	12	200 mm	200 mm	600 mm	Ground Floor / Mezzanine

Window Schedule				
Mark	Level	Family and Type	Window Style	Width / Height
01				
01	Ground Floor	AUS_Fixed_Window-1L: Canten Window		2400 mm / 1300 mm
02	Ground Floor	AUS_Fixed_Window-1L: 4100 x 808		1800 mm / 1300 mm
03	Ground Floor	AUS_Fixed_Window-1L: Canten Window 4		1200 mm / 800 mm
04	Ground Floor	AUS_Fixed_Window-1L: Canten Window 4		1200 mm / 800 mm
05	Ground Floor	AUS_Fixed_Window-1L: Canten Window 2		2400 mm / 800 mm
06	Ground Floor	AUS_Fixed_Window-1L: Canten Window 2		2400 mm / 800 mm
07	Ground Floor	AUS_Fixed_Window-1L: Canten Window 2		2400 mm / 800 mm
08	Ground Floor	AUS_Fixed_Window-1L: 4100 x 808		1800 mm / 1300 mm
09	Ground Floor	AUS_Fixed_Window-1L: 4100 x 808		1800 mm / 1300 mm
10	Ground Floor	AUS_Fixed_Window-1L: 2400 x 807		2050 mm / 2400 mm
11	Ground Floor	AUS_Fixed_Window-1L: 2400 x 807		2050 mm / 2400 mm
12	Ground Floor	AUS_Fixed_Window-1L: 2400 x 807		2050 mm / 2400 mm
13	Ground Floor	AUS_Fixed_Window-1L: Canten Window		2400 mm / 1300 mm
14	Ground Floor	AUS_Fixed_Window-1L: Canten Window 3		1800 mm / 1300 mm
15	Ground Floor	AUS_Fixed_Window-1L: Canten Window 3		1800 mm / 1300 mm
16	Ground Floor	AUS_Fixed_Window-1L: Canten Window 3		1800 mm / 1300 mm
17	Mezzanine	AUS_Fixed_Triangular: FX1209		1900 mm / 1200 mm
18	Mezzanine	AUS_Fixed_Triangular: 600 x 600		800 mm / 1200 mm
19	Low Roof	AUS_Fixed_Triangular: 600 x 600		800 mm / 1180 mm
20	Low Roof	AUS_Fixed_Triangular: 600 x 600		800 mm / 1180 mm
21	Low Roof	AUS_Fixed_Triangular: 600 x 600		800 mm / 1180 mm

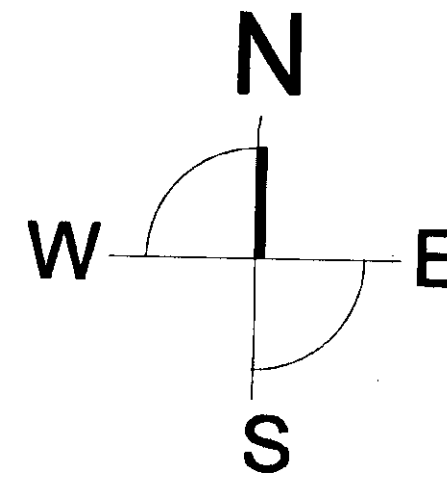
Door Schedule				
Mark	Level	Family and Type	Count	Width / Height
1				
01	Basement	M_Overhead-Rolling: 2400 x 2100mm	1	2400 mm / 2600 mm
01	Ground Floor	AUS_Single Door Timber Frame: 820 x 2143mm	1	820 mm / 2040 mm
02	Basement	M_Double-Flush: 1830 x 2040mm	1	1830 mm / 2040 mm
02	Ground Floor	AUS_Single Door Timber Frame: 820 x 2143mm	1	820 mm / 2040 mm
03	Ground Floor	AUS_Single Door Timber Frame: 820 x 2143mm	1	820 mm / 2040 mm
04	Ground Floor	AUS_Single Door Steel Frame: 820 x 2143mm	1	820 mm / 2143 mm
05	Ground Floor	M_Curtain Wall Dbl Glass: M_Curtain Wall Dbl Glass	1	2751 mm / 2340 mm
06	Ground Floor	AUS_Single Door Steel Frame: 820 x 2143mm	1	820 mm / 2143 mm
08	Basement	AUS_Single Door Steel Frame: 1200 x 2143mm 2	1	1200 mm / 2143 mm
09	Ground Floor	AUS_Single Door Steel Frame: 820 x 2143mm	1	820 mm / 2143 mm
09	Ground Floor	AUS_Single Door Timber Frame: 820 x 2143mm	1	820 mm / 2040 mm
10	Ground Floor	AUS_Single Door Timber Frame: 820 x 2143mm	1	820 mm / 2040 mm
11	Ground Floor	AUS_Single Door Timber Frame: 820 x 2143mm	1	820 mm / 2143 mm
13	Ground Floor	AUS_Single Door Timber Frame: 820 x 2143mm	1	820 mm / 2040 mm
14	Ground Floor	AUS_Single Door Timber Frame: 820 x 2143mm	1	820 mm / 2143 mm
15	Ground Floor	AUS_Cavity Face Sliding Door: 820 x 2143mm	1	820 mm / 2143 mm
16	Ground Floor	M_Curtain Wall Dbl Glass: M_Curtain Wall Dbl Glass	1	2063 mm / 2040 mm
17	Ground Floor	M_Curtain Wall Dbl Glass: M_Curtain Wall Dbl Glass	1	2063 mm / 2040 mm
19	Ground Floor	AUS_Single Door Timber Frame: 820 x 2143mm	1	820 mm / 2143 mm
19	Ground Floor	AUS_Single Door Timber Frame: 820 x 2143mm	1	820 mm / 2143 mm
20	Basement	M_Overhead-Sectional: 3000 x 2100	1	3000 mm / 2100 mm
21	Basement	M_Double-Flush: 1830 x 2040mm	1	1830 mm / 2040 mm
22	Basement	M_Double-Flush: 1830 x 2040mm	1	1830 mm / 2040 mm
24	Basement	M_Overhead-Sectional: 1500 x 2100mm 2	1	1500 mm / 2100 mm
24	Basement	M_Overhead-Sectional: 3000 x 2100	1	3000 mm / 2100 mm
26	Basement	AUS_Double-Flush: 1640 x 2143mm	1	1640 mm / 2040 mm
26	Basement	AUS_Double-Flush: 1640 x 2143mm	1	1640 mm / 2040 mm
27	Mezzanine	AUS_Cavity Face Sliding Door: 720 x 2040mm	1	720 mm / 2040 mm
31	Basement	AUS_Single Door Timber Frame: 820 x 2143mm	1	820 mm / 2040 mm
33	Basement	AUS_Single Door Steel Frame: 820 x 2143mm	1	820 mm / 2143 mm



LOCATION MAP



SITE MAP



JOHN RICHARDS SURVEYS
REGISTERED SURVEYOR
4 HENDY AVENUE

THIS PLAN IS TO BE READ
IN CONJUNCTION WITH
DA 2011 / 9774
WARRINGAH COUNCIL

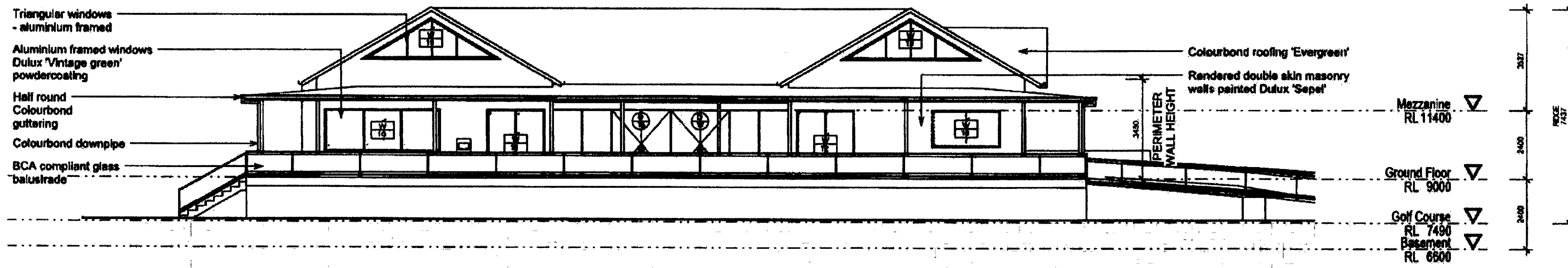
couvaras ARCHITECTS
SUITE 101 BOX 335
SUTHERLAND NSW 2557
PH: 02 9545 0988
FAX: 02 9545 0989
E: ARCH@COUVARAS.COM
NEW BUSINESS REGISTRATION NUMBER 224

Site & Location Plan

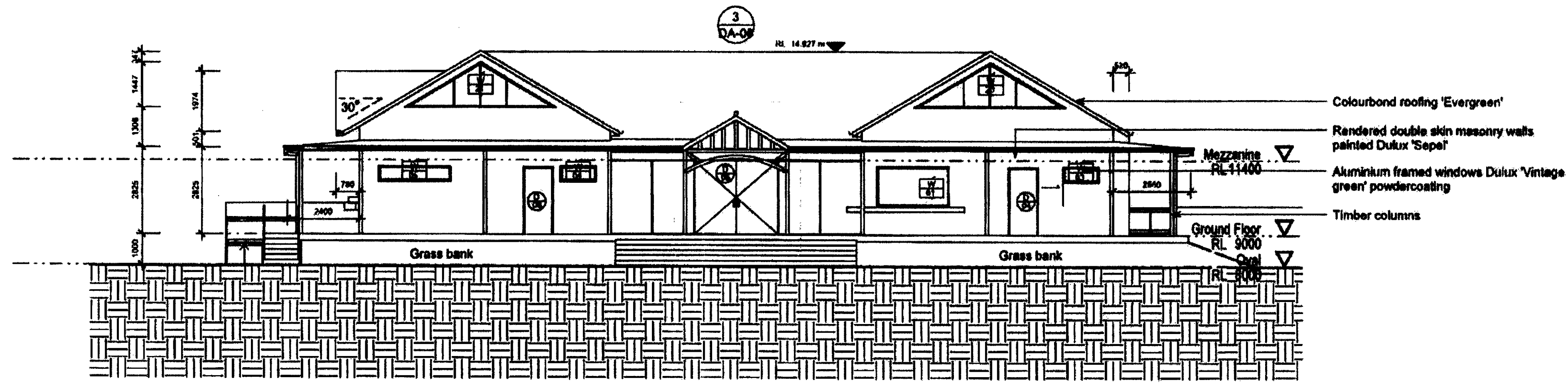
Multi User Sports Amenities Building
Griffith Park, Anzac Ave Collaroy
Long Reef Golf Club & Warringah Council

15 August 2011
0820 DA-01
Scale 1 : 200

1 TENDER ISSUE
Issue Amendment
04/06/09
Date
Figured dimensions only to be used. Do not scale off drawings. Any discrepancies to be verified on site.



1 East Elevation
1 : 100



2 West Elevation
1 : 100

THIS PLAN IS TO BE READ
 IN CONJUNCTION WITH
 DA 2011 / 0774
 WARRINGAH COUNCIL

Drawing
East & West Elevations

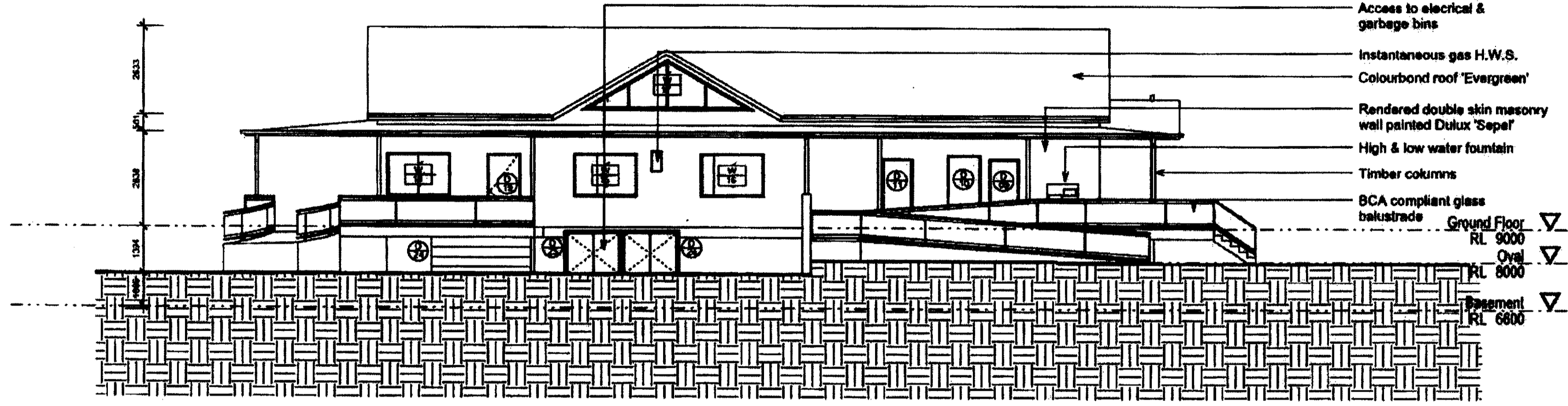
Project
Multi User Sports Amenities Building
 Griffith Park, Anzac Ave Collaroy
 Long Reef Golf Club & Warringah Council

Issue: Amendment
 Date: 19 April 2011
 Figured dimensions only to be used. Do not scale off drawings. Any discrepancies to be verified on site.

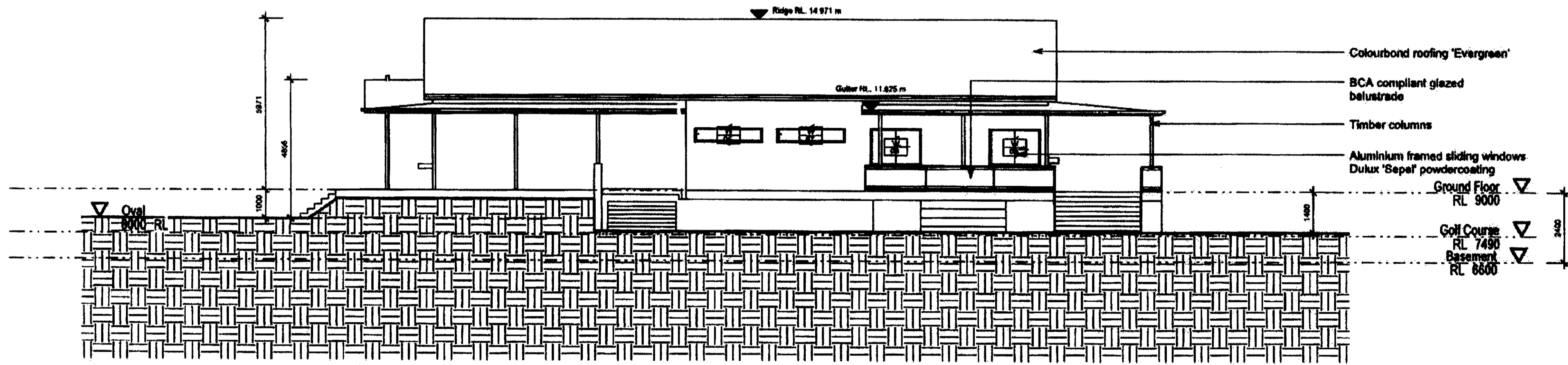
Issue **2**

0820 DA-04

Scale 1 : 100



1 North Elevation
1 : 100



2 South Elevation
1 : 100

THIS PLAN IS TO BE READ
 IN CONJUNCTION WITH
 DA 2011 / 8774
 WARRINGAH COUNCIL

couvaras
 ARCHITECTS
 PO BOX 335
 BRINDLEVADE NSW 2258
 PH: 6442 0908
 FAX: 6442 1973
 Email: info@couvaras.com.au
 www.couvaras.com.au

Drawing
North & South Elevations

Project
Multi User Sports Amenities Building
 Griffith Park, Anzac Ave Collaroy
 Long Reef Golf Club & Warringah Council

Issue
 Amendment
 Date
 19 April 2011

Issue
2
0820 DA-05
 Scale 1 : 100

Figured dimensions only to be used. Do not scale off drawings. Any discrepancies to be verified on site.